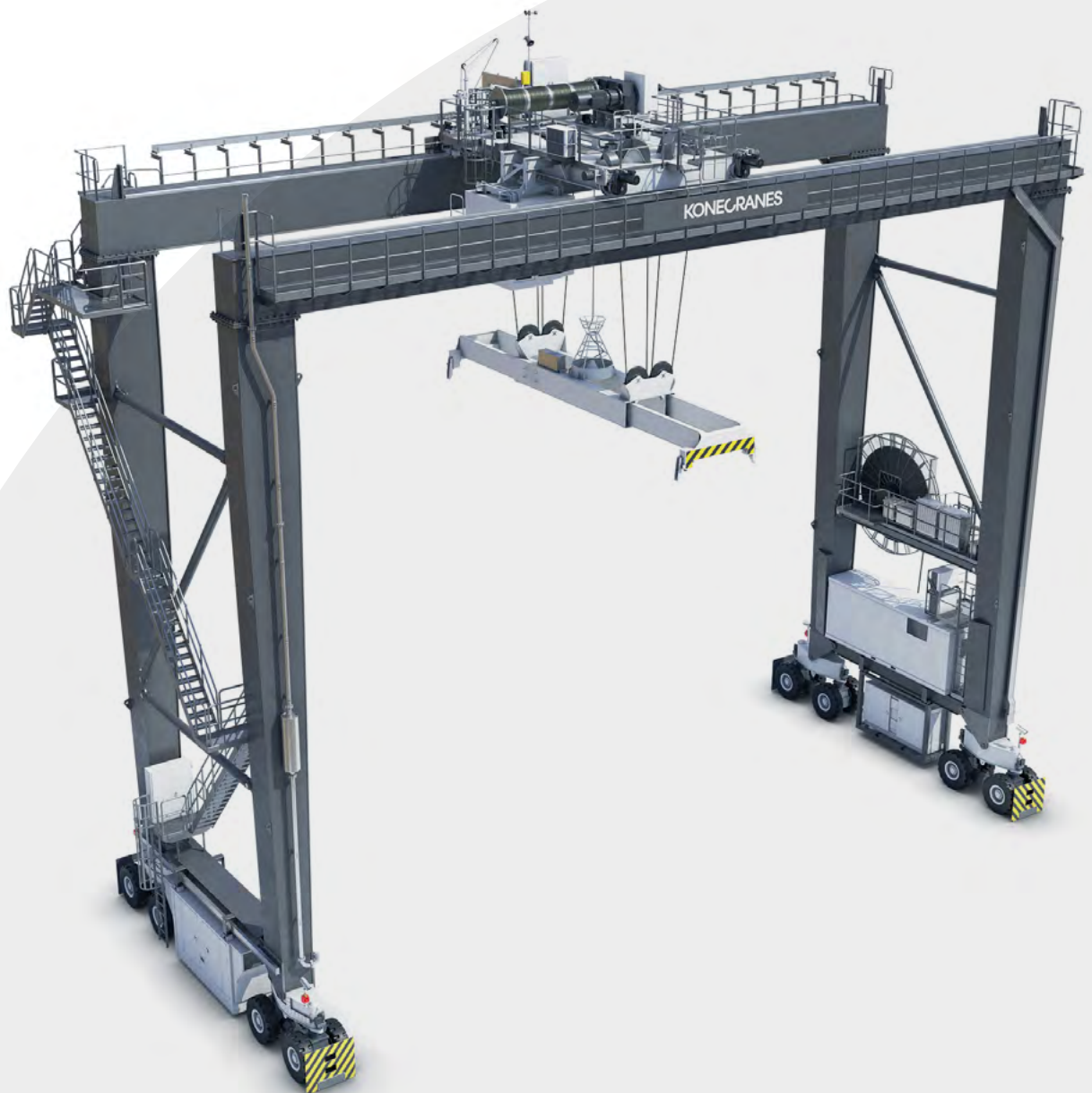
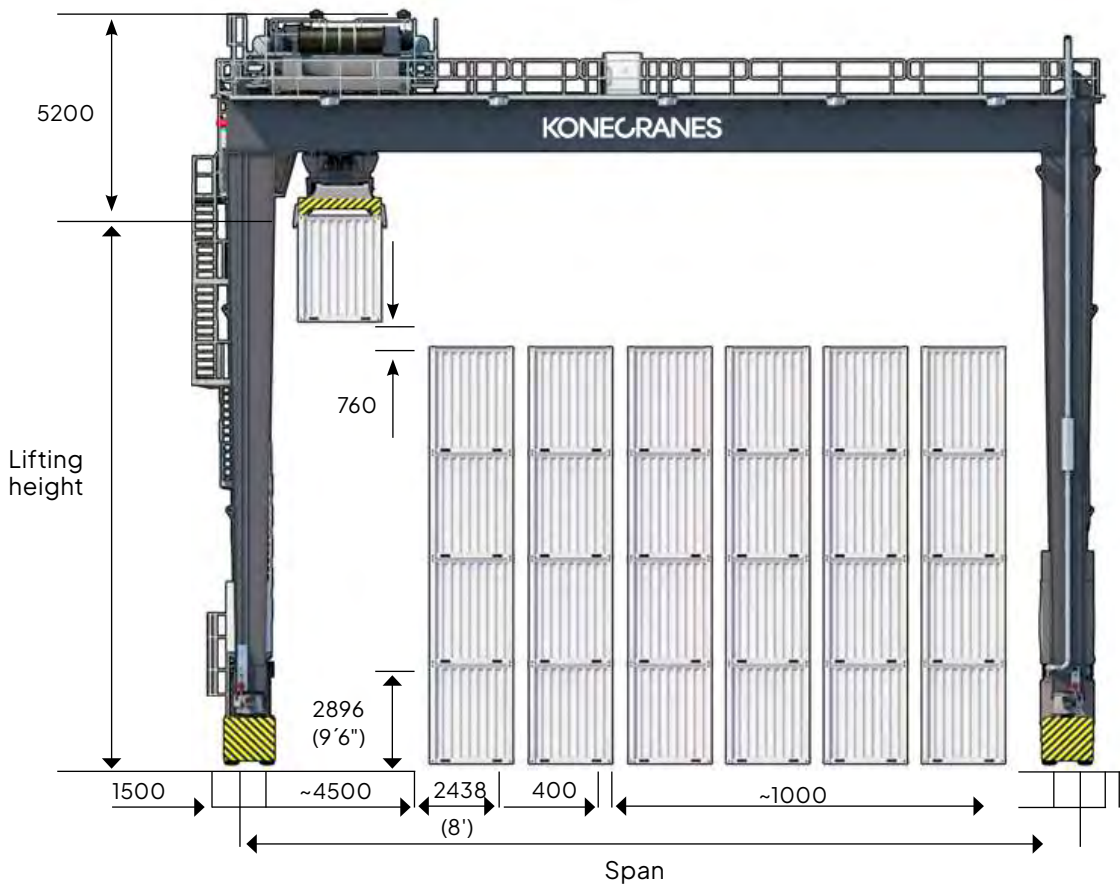


# Konecranes EAS RTG



# The steady performer

## Dimensions and speeds

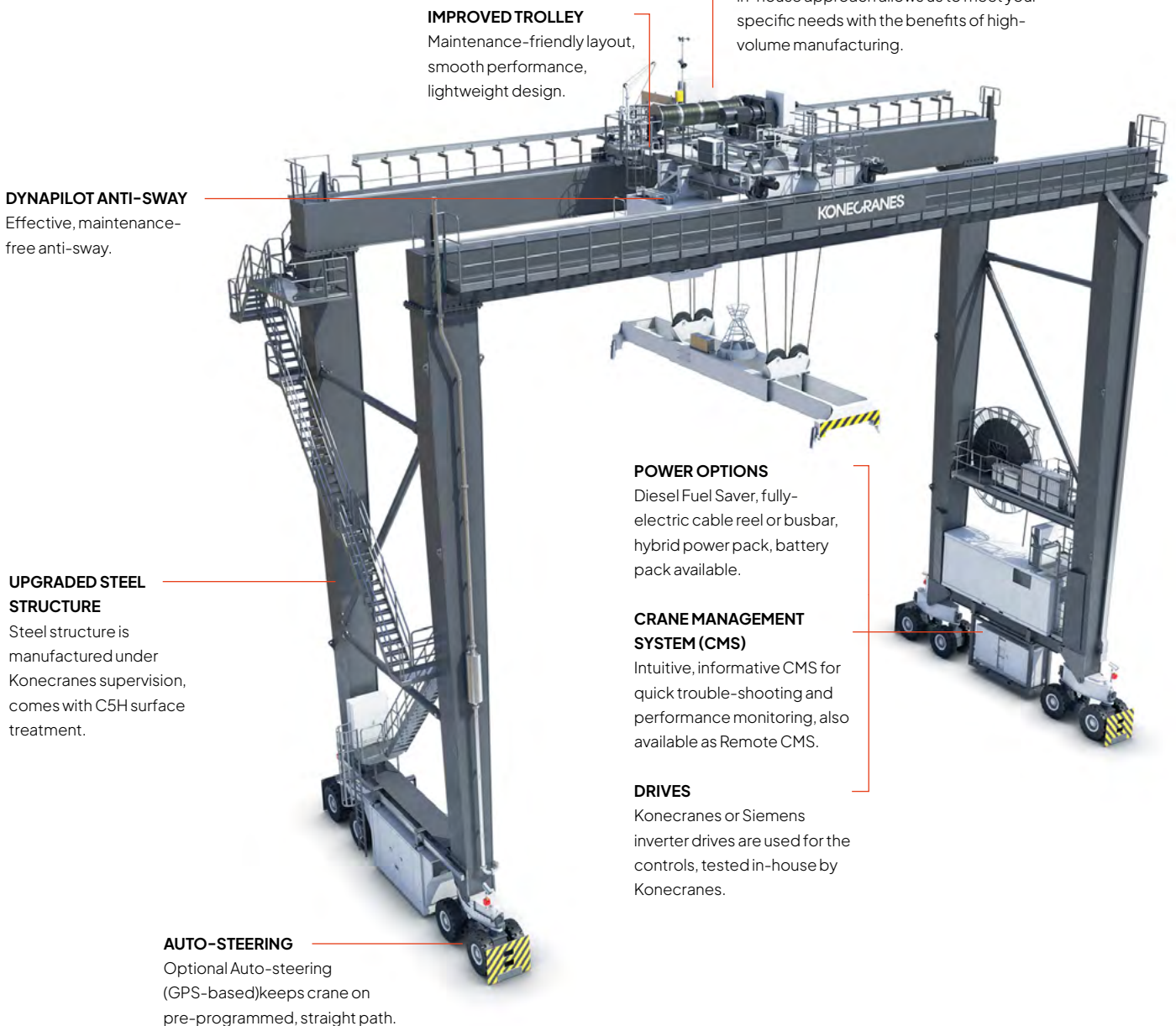


WIDTH	SPAN*	HEIGHT	LIFTING HEIGHT	HOISTING SPEED, 8-WHEELER / 16-WHEELER
5+lane	20,800	1-OVER-3	12,340	<b>With load</b> 23 to 26 m/min
6+lane	23,600	1-OVER-4	15,240	<b>Empty spreader</b> 52 to 58 m/min
7+lane	26,400	1-OVER-5 1-OVER-6	18,100 21,000	<b>Trolley traversing speed</b> 70m/min <b>Gantry</b> 130m/min

\*According to terminal dimensions

# For a reliable yard operation

The Konecranes EAS RTG is known as the steady performer. We have made some important improvements to the crane. We made the steel structure lighter, upgraded the bogies with direct drive, and upgraded the trolley with the Konecranes DynaPilot anti-sway system. The crane comes with Konecranes motors and gear reducers. If you are committed to RTG-driven yard operations, the Konecranes EAS RTG will steadily drive your business for many years to come.



## IMPROVED TROLLEY

Maintenance-friendly layout, smooth performance, lightweight design.

## CORE OF LIFTING

We design the integrated motor/gearbox system package, specifically for this RTG crane and the motions it performs. This in-house approach allows us to meet your specific needs with the benefits of high-volume manufacturing.

## DYNAPILOT ANTI-SWAY

Effective, maintenance-free anti-sway.

## UPGRADED STEEL STRUCTURE

Steel structure is manufactured under Konecranes supervision, comes with C5H surface treatment.

## POWER OPTIONS

Diesel Fuel Saver, fully-electric cable reel or busbar, hybrid power pack, battery pack available.

## CRANE MANAGEMENT SYSTEM (CMS)

Intuitive, informative CMS for quick trouble-shooting and performance monitoring, also available as Remote CMS.

## DRIVES

Konecranes or Siemens inverter drives are used for the controls, tested in-house by Konecranes.

## AUTO-STEERING

Optional Auto-steering (GPS-based) keeps crane on pre-programmed, straight path.

# Operating concept

## Cabin and remote operation

The cabin is spacious, with good ergonomics and visibility. Remote operation is also possible, putting your operators in an office environment where their work can be more productive because RTG waiting and idling time is minimized. The operator task list also becomes more diverse.

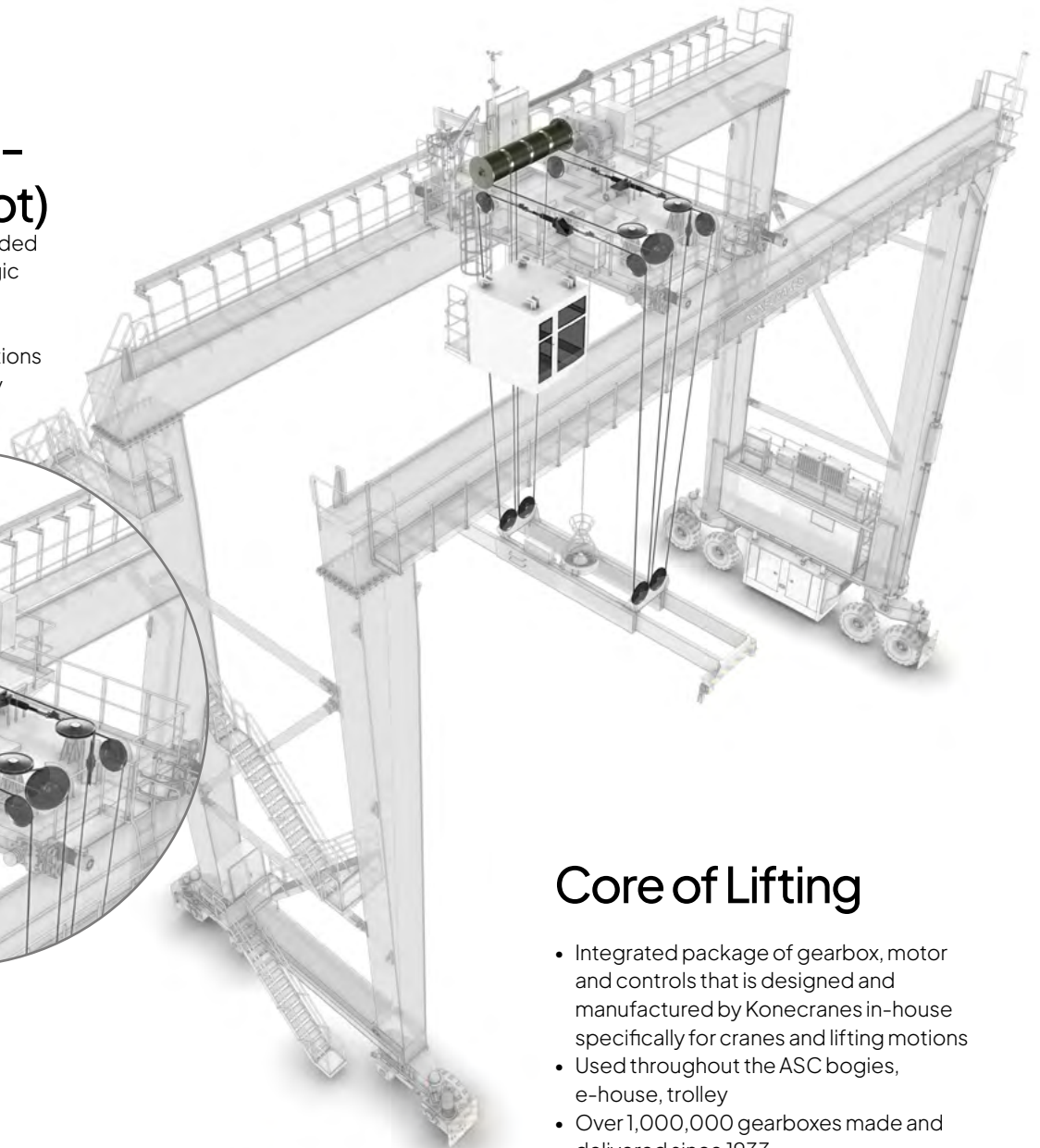
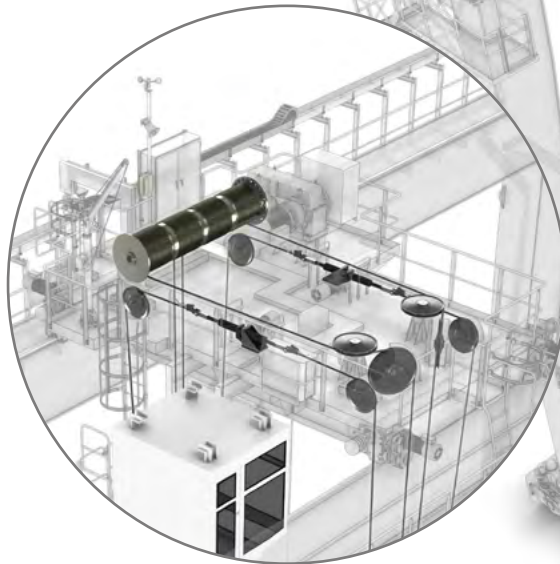




# Trolley

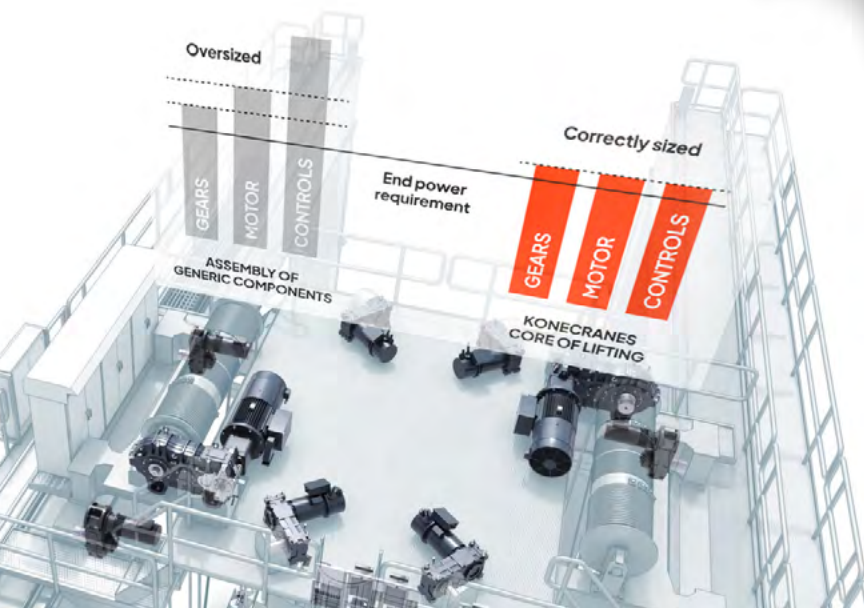
## Electronic anti-sway (DynaPilot)

- Anti-sway software embedded in crane Programmable Logic Controller (PLC)
- Maintenance-free
- Trolley and gantry accelerations calculated to minimize sway



## Core of Lifting

- Integrated package of gearbox, motor and controls that is designed and manufactured by Konecranes in-house specifically for cranes and lifting motions
- Used throughout the ASC bogies, e-house, trolley
- Over 1,000,000 gearboxes made and delivered since 1933
- Over 2,000,000 motors made and delivered since 1933



**NEW!**  
Silent components for silent hoisting

# Technical data

MAIN PARAMETERS	
Lifting capacity	40LT
Performance	30 containers/hr
Main dimensions, vertical	1-over-3 up to 1-over-6
Main dimensions, horizontal	Up to 7 + truck lane
Simultaneous movements	Two movements

SPEEDS	ELECTRICAL ANTI-SWAY
Hoisting with load	23 to 26 m/min
Hoisting, empty spreader	up to 60
Trolley	70 m/min
Gantry	130 m/min

SWAY PREVENTION SYSTEM	ELECTRICAL ANTI-SWAY (DYNAPILOT)
Performance	30+ containers/hr
All Smart Features + remote available	
Fine positioning	Optional spreader side-shift
Trim	±3°
Skew	±5°
Bogies	8 wheels / 16 wheels
Tire size / pressure, bar	16 wheels 14.00 x 24 / 10, 8 wheels 18.00 x 25 / 10
Wheel load, tons, with 1-over-5 and 6 + truck lane, max. load, no wind	15.1 for 16-wheeler, 30.6 for 8-wheeler
Runway width	Min. recommended 1.5m
Wheels driven	50% (for both 8-wheeler and 16-wheeler)

MAIN OPTIONS	
DGPS Auto-steering	Dual-antenna technology for accurate real-time heading info and rapid signal recovery
Diesel Fuel Saver System	Fully variable speed application

# Smart Features, components, power options

SMART FEATURES*	
<b>Auto-steering</b>	Keeps RTG on a pre-programmed, straight path creating "virtual rails" +/-100mm
<b>Auto-positioning</b>	Automatically stops gantry & trolley over next container target slot based on "hold to run" approach (requires Auto-steering)
<b>Auto-truck Guiding</b>	Automatically guides the truck to position under the RTG in line with the bay, like entering a car wash
<b>Stack Collision Prevention</b>	Helps crane operator (or remote operator) prevent container collisions and knockdowns when a container is moved in bay direction
<b>Truck Lift Prevention</b>	Automatically stops hoisting motion if a truck lift is detected
<b>Auto-path Optimizing</b>	Increases container handling efficiency in the stack
<b>Auto-TOS Reporting</b>	Enables accurate yard inventory

\*All Konecranes EAS RTGs are delivered with built-in readiness for remote operation


CORE OF LIFTING COMPONENTS*	
<b>Motors*</b>	Konecranes
<b>Gear reducers*</b>	Konecranes
<b>Drive system*</b>	Konecranes/Siemens drives
<b>Programmable Logic Controller (PLC)</b>	Siemens

\*Extended 5-year warranty available for key Konecranes components

POWER SUPPLY OPTIONS	PRIMARY POWER SOURCE	SECONDARY POWER SOURCE
Diesel engine	X	X
Cable reel 3-phase, 400V-10kV	X	
Busbar, 460-500V	X	
Hybrid	X	
Battery pack	X	X
Auxiliary genset		X



Konecranes is a global leader in material handling solutions, serving a broad range of customers across multiple industries. We consistently set the industry benchmark, from everyday improvements to the breakthroughs at moments that matter most, because we know we can always find a safer, more productive and sustainable way. That's why, with around 16,600 professionals in over 50 countries, Konecranes is trusted every day to lift, handle and move what the world needs. In 2023, Group sales totalled EUR 4.0 billion. Konecranes shares are listed on Nasdaq Helsinki (symbol: KCR).

© 2024 Konecranes. All rights reserved. 'Konecranes' and  are either registered trademarks or trademarks of Konecranes.

This publication is for general informational purposes only. Konecranes reserves the right at any time, without notice, to alter or discontinue the products and/or specifications referenced herein. This publication creates no warranty on the part of Konecranes, express or implied, including but not limited to any implied warranty or merchantability or fitness for a particular purpose.

**KONECRANES** Moves what matters.