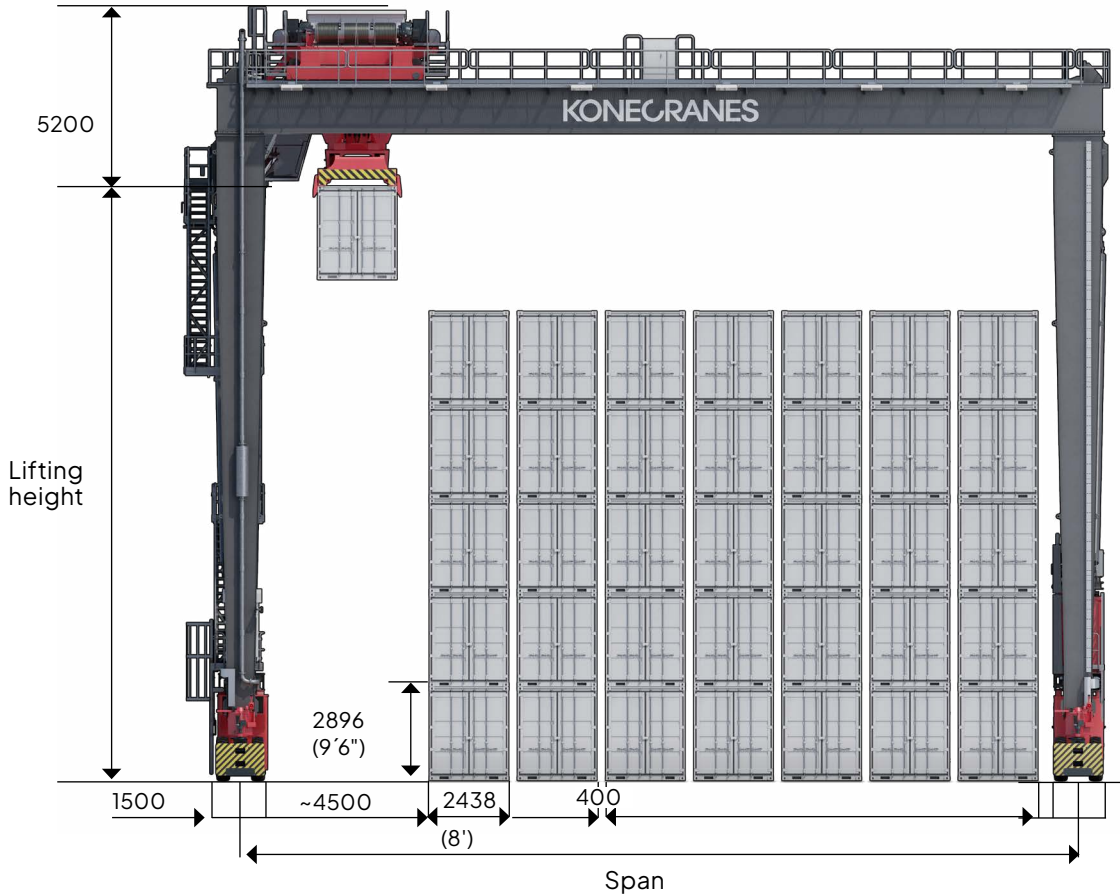


Konecranes RTG



From the creator of the modern RTG

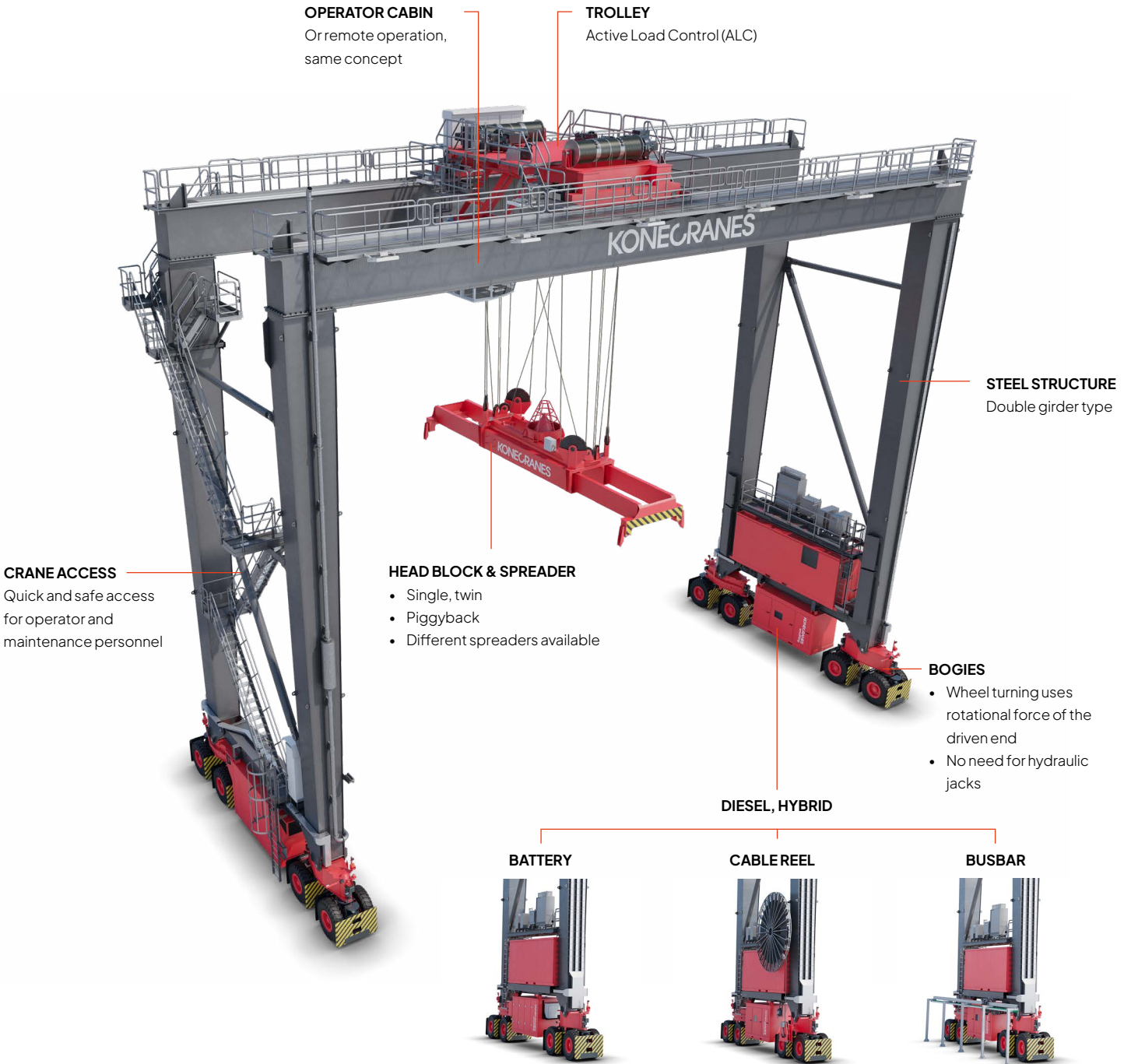
Typical dimensions



WIDTH	TYPICAL RANGE OF SPAN
5 + lane	19,400-21,400
6 + lane	22,200-24,200
7 + lane	25,000-27,000
8 + lane	27,800-29,800
9 + lane	30,600-32,600
10 + lane	33,400-35,400

HEIGHT	LIFTING HEIGHT
1-over-3	12,340
1-over-4	15,240
1-over-5	18,100
1-over-6	21,000

Main modules, all free of hydraulics



Operating concept

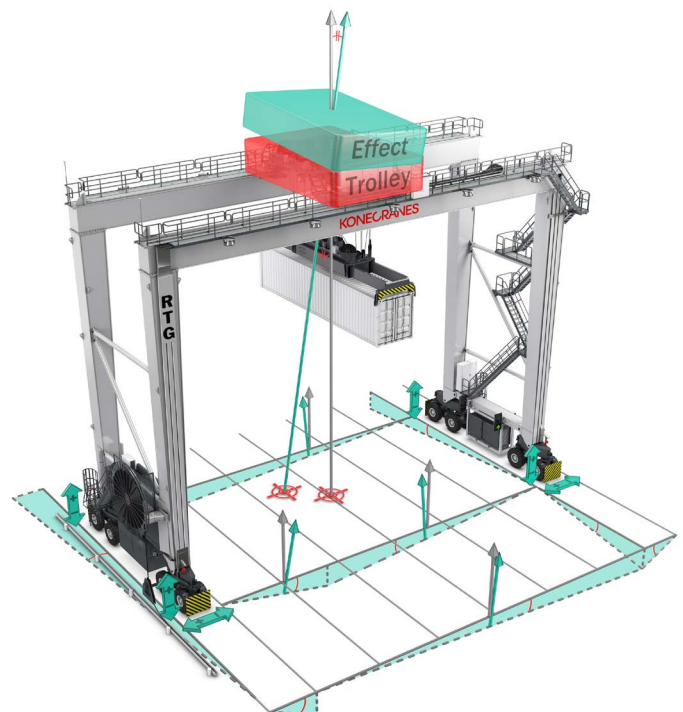


Smarter cabin and remote operation

The smarter cabin provides the operator with excellent visibility and comfort. The operating concept is consistent across cabin operation and remote operation, with a user interface that works identically across both. It is remarkably easy to move to remote operation: the crane moves into an office working environment.

Better tolerance for uneven yard surfaces

- Bogies with pinned joints
- Steel structure with pinned diagonals
- Dual hoist machinery trolley
- Four-wheel trolley drive
- Tolerates even ± 1 ft (≈ 30 cm) difference in ONE corner in static condition
- With Active Load Control, a prerequisite for successful automated operation



Trolley

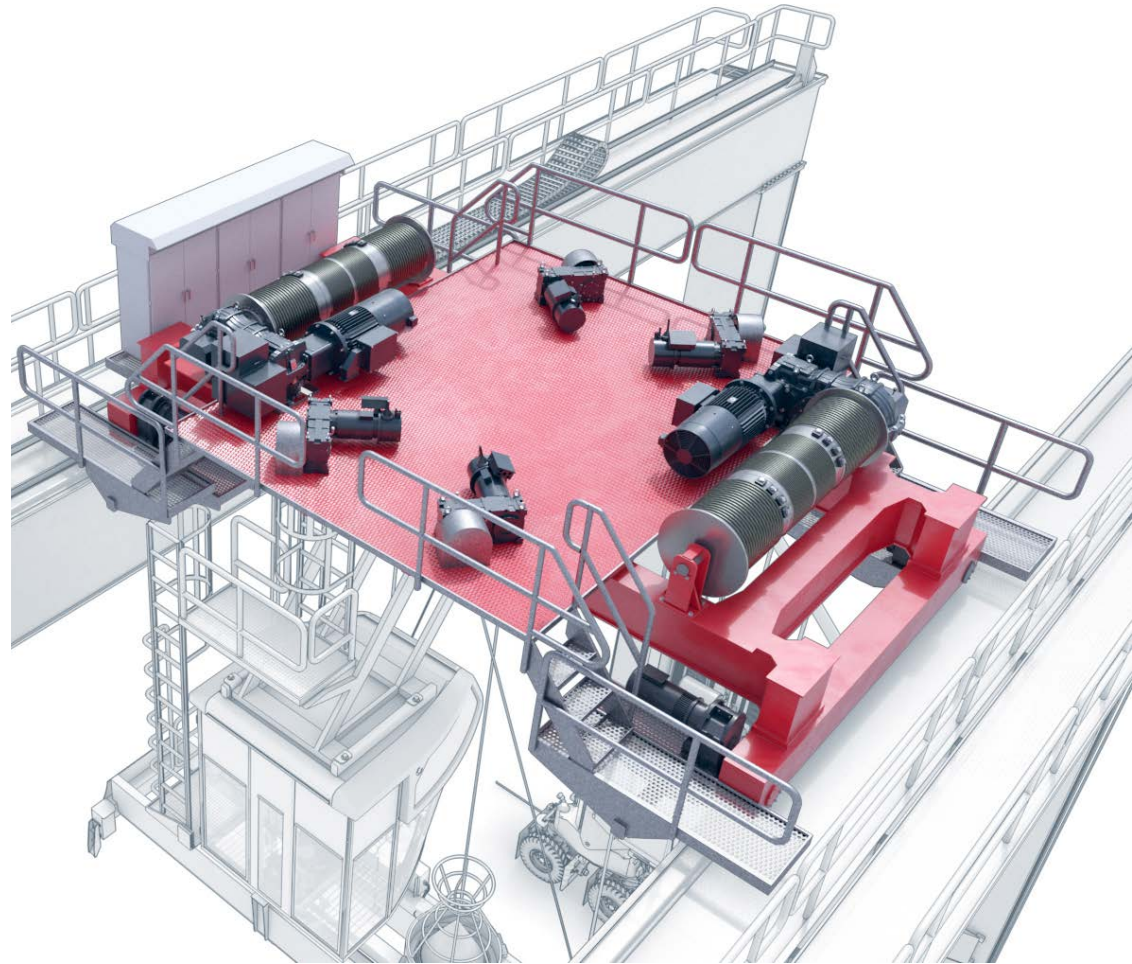
ACTIVE LOAD CONTROL (ALC)
 Integrated sway prevention and fine positioning system

The container:

- Does not sway
- Can be fine-positioned in all directions without moving gantry or trolley
- Is fully controlled during the entire work cycle

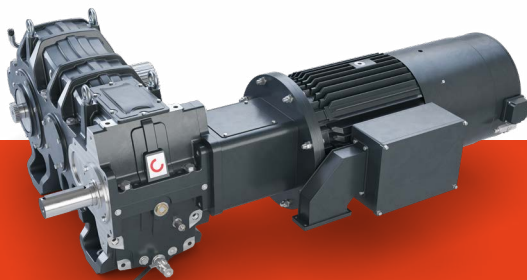
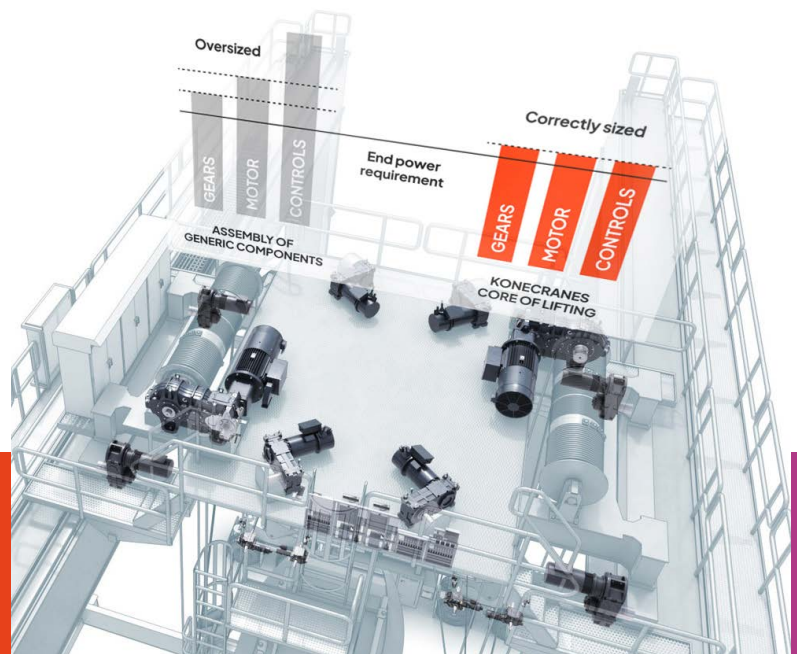
You get:

- Faster and safer work cycles
- Reduced energy consumption
- Reduced crane wear



Core of Lifting

- Integrated package of gearbox, motor and controls that is designed and manufactured by Konecranes in-house specifically for cranes and lifting motions
- Used throughout the bogies, e-house, trolley
- Over 1,000,000 gearboxes made and delivered since 1933
- Over 2,000,000 motors made and delivered since 1933



NEW!
 Silent components for silent hoisting

Technical data

MAIN PARAMETERS	
Lifting capacity	40LT, 50LT
Main dimensions, vertical	1-over-3 up to 1-over-6
Main dimensions, horizontal	5 + truck lane up to 10 + truck lane
Simultaneous movements	2 or 3 movements

SPEEDS	Active Load Control (ALC)
Lifting speed with full load	31 m/min
Lifting speed without load	62 m/min
Trolley travel speed with & without load	Up to 82 m/min
Gantry travel speed	Up to 135 m/min

SWAY PREVENTION SYSTEM	Active Load Control (ALC)	
Performance	40+ containers/hr	
Automation readiness	Full	
Fine positioning	±250mm (4 directions)	
Trim	±5°	
Skew	±5°	
BOGIES	16 WHEELS	8 WHEELS
Tire size / pressure, bar	14.00 x 24 / 10	18.00 x 25 / 10
Wheel load, tons, with 1-over-5 and 6 + truck lane, max. load, no wind	18.0	31.5
Runway width	Min. recommended 1500mm	Min. recommended 1500mm
Wheels driven	50% (8 wheels)	50% (4 wheels)

Smart Features, components, power options

SMART FEATURES	
DGPS	Dual-antenna technology for accurate real-time heading info and rapid signal recovery
Auto-steering	Keeps RTG on a pre-programmed, straight path creating "virtual rails" +/-100mm
Auto-TOS Reporting	Enables accurate yard inventory
Auto-positioning	Requires Auto-steering and Auto-TOS Reporting. Automatically stops gantry & trolley over next container target slot based on "hold to run" approach.
Stack Collision Prevention	Helps crane operator (or remote operator) prevent container collisions and knockdowns when a container is moved in bay direction
Auto-path Optimizing	Requires Stack Collision Prevention and Auto-positioning. Calculates optimal hoist and trolley trajectory over the container stack with a "hold to run" approach.
Truck Lift Prevention	Automatically stops hoisting motion if a truck lift is detected
Auto-truck Guiding	Automatically guides the truck to position under the RTG in line with the bay, like entering a car wash

*All Konecranes RTGs are delivered with built-in readiness for remote operation

CORE OF LIFTING COMPONENTS*	16 WHEELS AND 8 WHEELS
Motors*	Konecranes
Gear reducers*	Konecranes
Drive system*	Konecranes drives
Programmable Logic Controller (PLC)	Siemens

*5-year warranty as a standard

POWER SUPPLY OPTIONS	PRIMARY POWER SOURCE	SECONDARY POWER SOURCE
Diesel engine (Diesel Fuel Saver system)	X	X
Cable reel 3-phase, 50/60 Hz, 1-10kV	X	
Busbar, 460-500V	X	
Hybrid	X	
Battery pack	X	X
Auxiliary genset		X

Weight (kg)

RTG SIZE	STEEL STRUCTURE	WALKWAYS	CABLEWAYS	TOTAL WEIGHT [KG]
1-over-5, 5+lane	58,000	6800	1240	64,800
1-over-5, 6+lane	61,500	7000	1400	68,500
1-over-5, 7+lane	64,000	7200	1560	71,200
1-over-6, 5+lane	66,500	6800	1240	73,300
1-over-6, 6+lane	70,000	7000	1400	78,400
1-over-6, 7+lane	73,500	7200	1560	82,260
16 W bogies				22,000
8 W bogies				25,000
Trolley Active Load Control (ALC)				22,500
Spreader				8000
Headblock				2000
Diesel generator				6000
E-room				5000

With diesel power generation

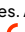
Hybrid (apply - 0.1 ton)
 Busbar (apply - 0.6 ton)
 Cable reel (apply + 0.6 ton)

RTG 16W ACTIVE LOAD CONTROL		WHEEL LOADS [T]					
Load	Wind speed	1-over-5			1-over-6		
[t]	[m/s]	5+Lane	6+lane	7+lane	5+lane	6+lane	7+lane
0		10.5	10.8	11.0	11.0	11.3	11.6
26	0	13.4	13.7	14.0	13.9	14.2	14.6
40.6	0	15.0	15.4	15.6	15.5	15.9	16.2
50.8		16.1	16.5	16.8	16.7	17.0	17.4
0		12.6	13.0	13.4	13.5	14.0	14.4
26	25	15.5	16.0	16.4	16.4	16.9	17.4
40.6	25	17.1	17.6	18.0	18.0	18.6	19.1
50.8	25	18.2	18.8	19.2	19.2	19.7	20.2

RTG 8W ACTIVE LOAD CONTROL		WHEEL LOADS [T]					
Load	Wind speed	1-over-5			1-over-6		
[t]	[m/s]	5+lane	6+lane	7+lane	5+lane	6+lane	7+lane
0		21.3	21.9	22.4	22.4	23.0	23.6
26	0	27.1	27.8	28.3	28.2	28.9	29.5
40.6	0	30.4	31.1	31.6	31.4	32.2	32.8
50.8		32.6	33.4	34.0	33.7	34.5	35.2
0		25.6	26.5	27.2	27.5	28.4	29.3
26	25	31.4	32.3	33.1	33.2	34.2	35.2
40.6	25	34.6	35.6	36.4	36.5	37.5	38.5
50.8	25	36.9	37.9	38.8	38.7	39.8	40.8



Konecranes is a global leader in material handling solutions, serving a broad range of customers across multiple industries. We consistently set the industry benchmark, from everyday improvements to the breakthroughs at moments that matter most, because we know we can always find a safer, more productive and sustainable way. That's why, with around 16,600 professionals in over 50 countries, Konecranes is trusted every day to lift, handle and move what the world needs. In 2023, Group sales totaled EUR 4.0 billion. Konecranes shares are listed on Nasdaq Helsinki (symbol: KCR).

© 2024 Konecranes. All rights reserved. 'Konecranes', 'Moves what matters' and  are either registered trademarks or trademarks of Konecranes Global Corporation.

This publication is for general informational purposes only. Konecranes reserves the right at any time, without notice, to alter or discontinue the products and/or specifications referenced herein. This publication creates no warranty on the part of Konecranes, express or implied, including but not limited to any implied warranty or merchantability or fitness for a particular purpose.

KONECRANES Moves what matters.