

RailQ 3D Runway Survey





Accurate measurements with less downtime

RailQ 3D uses the latest high-definition surveying technology to measure and analyze the critical aspects of the runway system including: the runway rails alignment to one another, the alignment of each rail to its corresponding runway girder, and rail and girder condition.

The survey data is accurate and repeatable. Our proprietary analysis and 3D visualization software produces reports that visualize the problem areas. Konecranes engineers review the data to recommend alignment strategies and highlight areas where critical safety and production issues are found.

RailQ 3D can help you plan maintenance in advance
Performing RailQ 3D as part of a periodic inspection program on your critical production crane runways can identify chronic issues signaling the need for a long term engineered solution.

This approach allows you to plan maintenance far in advance and implement corrective actions during planned outages and production stoppages to limit the effects of lost production.

Get a complete view of crane and rail geometry
Konecranes RailQ 3D Runway Survey and CraneQ Crane Geometric Survey work together for a complete view of crane and rail geometry.

The CraneQ Crane Geometric Survey provides accurate information detailing the alignment and the square of a crane. The scope of the survey includes wheels, guide rollers, end trucks, girders, and other components of the crane.



RailQ 3D reports available on Konecranes Portal

Your RailQ 3D report and recommendations are made available on the Konecranes Portal. The portal is your single point of access to our digital customer platforms.

When you have a Konecranes service agreement, you get quick and easy access to your crane maintenance information, asset condition and usage data, quotations and more. You can also browse and order spare parts, manuals or accessories for many brands, makes and models of industrial cranes and hoists.

Fast, comprehensive, safe runway survey

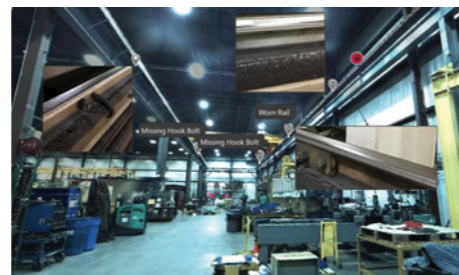
The condition of the runway influences how well a crane moves on its rails and affects the usability and lifetime of the crane and its traveling machineries. A runway in poor condition leads to reduced crane performance and reliability, and possibly to safety risks.

The RailQ 3D Runway Survey has been designed to deliver accurate information on the alignment of your crane runway and provide expert recommendations for corrective actions. RailQ 3D uses high-definition surveying techniques combined with point cloud data analysis to provide information on runway condition.

RailQ 3D takes you beyond guesswork with a proven, accurate and reliable system to help you find answers and make decisions.

→ Benefits

- Provides accurate data on the condition and alignment of the runway through high-definition surveying by trained specialists.
- Is safer to perform than a traditional runway survey because it uses a remotely operated data collection instrument.
- Gathers more data in less time than a traditional survey delivering the same information.
- Condition data and recommendations are easy to interpret and share. Field adjustment and repairs can be easily made with the information in the engineering survey drawings.



A RailQ 3D Runway Survey is recommended when:

- A crane has experienced or is planned to have a significant increase in usage or duty class
- Planning a modernization of the crane structure or driving machineries
- Planning to increase the lifting capacity of the crane(s)
- A new runway or runway rail has recently been installed
- A new crane will be installed on an existing runway
- An additional crane is being added to an existing runway
- Replacing end trucks or driving machineries
- Before and after an engineered or critical lift is performed
- Limited information is available on how the existing cranes were used in the past



Konecranes is a global leader in material handling solutions, serving a broad range of customers across multiple industries. We consistently set the industry benchmark, from everyday improvements to the breakthroughs at moments that matter most, because we know we can always find a safer, more productive and sustainable way. That's why, with around 16,600 professionals in over 50 countries, Konecranes is trusted every day to lift, handle and move what the world needs. In 2023, Group sales totaled EUR 4.0 billion. Konecranes shares are listed on Nasdaq Helsinki (symbol: KCR).

© 2024 Konecranes. All rights reserved. 'Konecranes,' 'Moves what matters' and  are either registered trademarks or trademarks of Konecranes.

This publication is for general informational purposes only. Konecranes reserves the right at any time, without notice, to alter or discontinue the products and/or specifications referenced herein. This publication creates no warranty on the part of Konecranes, express or implied, including but not limited to any implied warranty or merchantability or fitness for a particular purpose.

KONECRANES Moves what matters.