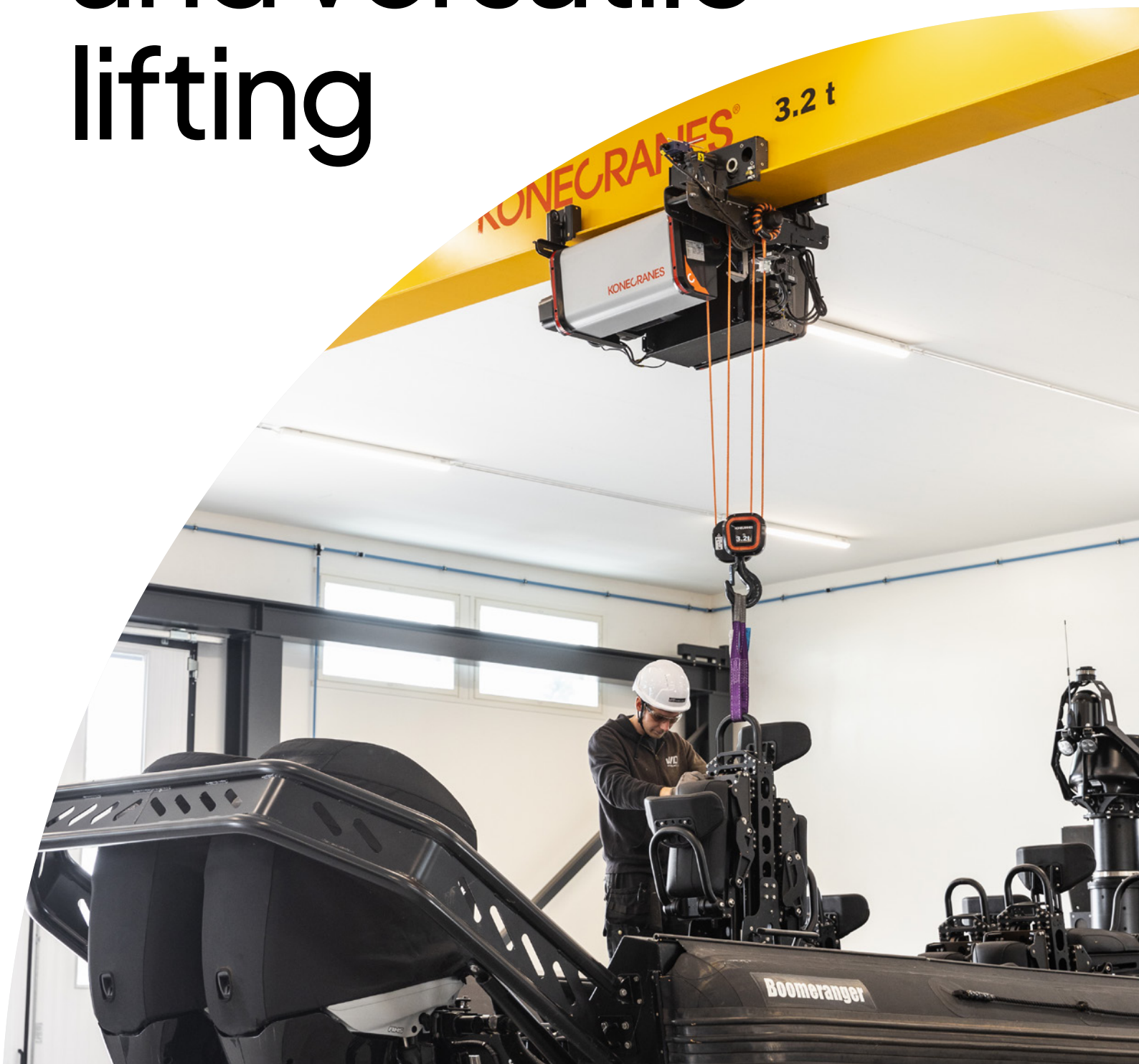
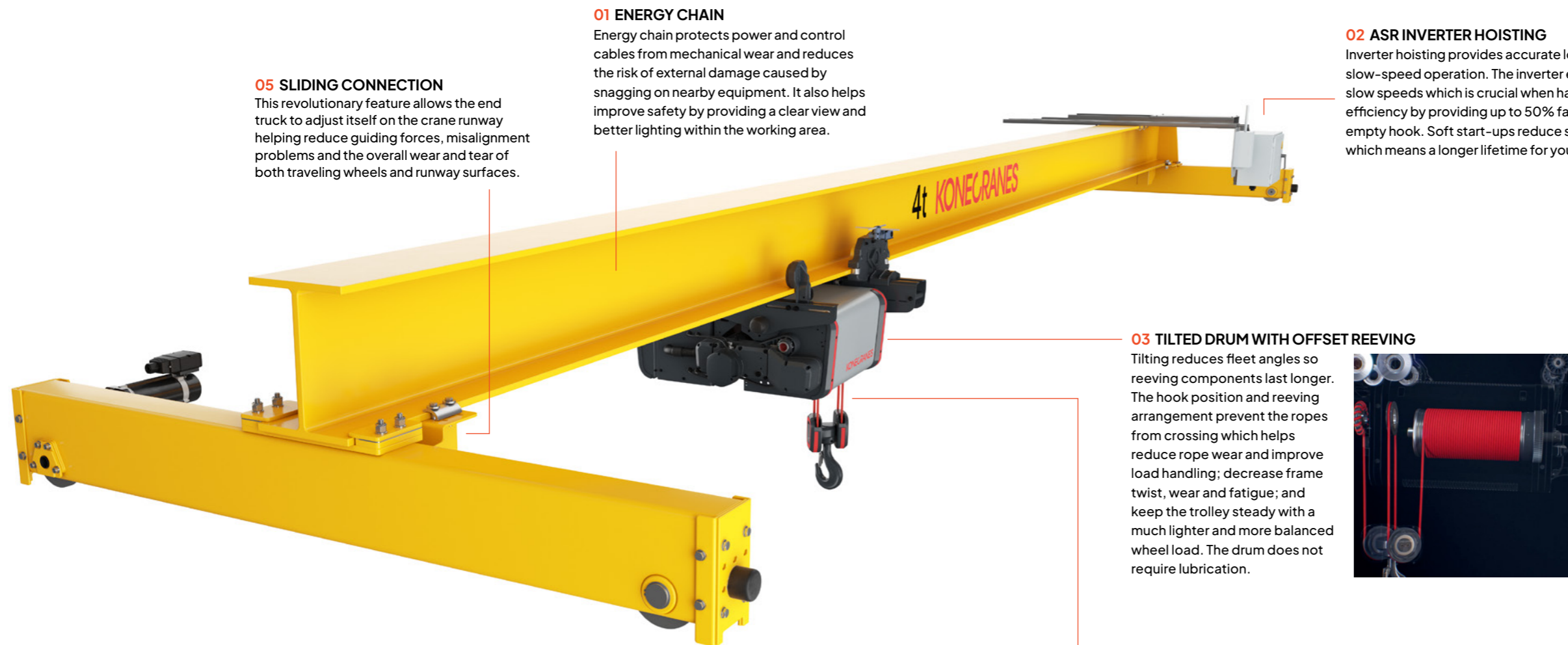


Innovative and versatile lifting



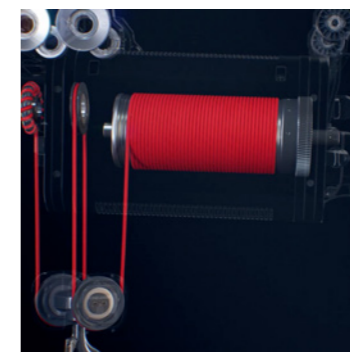


05 SLIDING CONNECTION
 This revolutionary feature allows the end truck to adjust itself on the crane runway helping reduce guiding forces, misalignment problems and the overall wear and tear of both traveling wheels and runway surfaces.

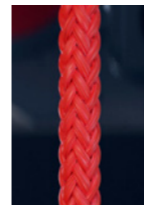
01 ENERGY CHAIN
 Energy chain protects power and control cables from mechanical wear and reduces the risk of external damage caused by snagging on nearby equipment. It also helps improve safety by providing a clear view and better lighting within the working area.

02 ASR INVERTER HOISTING
 Inverter hoisting provides accurate load positioning and controlled slow-speed operation. The inverter enables stepless hoisting for very slow speeds which is crucial when handling heavy loads. It also improves efficiency by providing up to 50% faster lifting with light loads or an empty hook. Soft start-ups reduce stress on the crane and its structure which means a longer lifetime for your crane and lower lifecycle costs.

03 TILTED DRUM WITH OFFSET REEVING
 Tilting reduces fleet angles so reeving components last longer. The hook position and reeving arrangement prevent the ropes from crossing which helps reduce rope wear and improve load handling; decrease frame twist, wear and fatigue; and keep the trolley steady with a much lighter and more balanced wheel load. The drum does not require lubrication.



04 SYNTHETIC ROPE
 Synthetic rope is as strong as steel rope, and in many cases more durable because it is not vulnerable to traditional rope defects. Synthetic rope doesn't require lubrication and there is reduced wear on the drum and reeving components due to less surface pressure and friction—helping you save on maintenance costs.



FEATURES	SPECIFICATIONS
Lifting capacity	Up to 20 tons
Lifting height	36 m
Span	30 m
Crane options	Single and double girder, top and under-running
Girder design	Profile, box, compact box
Rope	Synthetic rope default, steel wire rope option
Hoisting motor	Stepless inverter hoisting default, 2-speed hoisting option
Temperature	Standard temp: +5 to +40°C
Paint	Anodized aluminum frame painted with 70 µm epoxy powder
Hooks	DIN 15401
Trolley type	Single or double girder hoists, machinery hoist and fixed hoist
Power supply	Energy chain or flat cables
Control options	Radio, pendant as an option/backup
Integrated Smart Features	<ul style="list-style-type: none"> • Hook Centering • Snag Prevention • Follow Me
Environment	Indoor or outdoor

Innovations that boost your production

The Konecranes S-series crane sets the industry benchmark with a synthetic rope hoist and Smart Features to improve safety and productivity.

Packed with features, the Konecranes S-series crane is designed to keep your production running smoothly. This crane is a flexible lifting tool that makes it a perfect fit in a wide range of applications.

Suitable for a range of girder configurations, the Konecranes S-series rope hoist can lift up to 20 tons with its advanced design, including

off-set reeving and a tilted drum for longer reeving component lifetime.

A standardized inverter for hoisting brings ultimate control to lifting and unique Smart Features like Follow Me, Snag Prevention and Hook Centering take safety and efficiency to the next level.

Total load control

The Konecranes S-series radio controls are easy and comfortable to use and allow the operator to work at a safe distance away from the load. They also offer high accuracy and smooth load positioning thanks to stepless speed control. If needed, an optional backup pendant is available.



Hoists for all kinds of applications



01 FINGER PROTECTION

The hook block boasts improved finger protection and has a finger pocket that makes it safer and easier to grab when using features like Follow Me.

02 DIN HOOK

The hook is manufactured to meet strict safety standards.

05 INTEGRATED DISPLAY

Radio shows load display, indicates battery life and makes it easy to select different advanced features.

06 STEPLESS CONTROL

True stepless control for crane movements provides maximum accuracy and safety.

03 NEW MECHANICAL FEATURES

The thrust rocker and optional belt transmission make the trolley strong and stable and provide a more streamlined and sustainable design. The thrust rocker also helps distribute the load evenly across multiple wheels and eliminates the need for counterweights.

04 SAFETY LIGHT

The safety light provides a visual warning on the floor of the trolley location to operators and other personnel in the work area.



New low headroom hoist UP TO 10 TONS

The latest addition to the Konecranes S-series family is the new low headroom hoist. This compact hoist boasts excellent approach dimensions and smooth stepless lifting with load dependent lifting motor for the ultimate user experience and shorter cycle times.

Strong, lightweight, durable and clean synthetic rope improves the lifting experience by making it safer and easier to handle because it doesn't fray or produce sharp barbs like steel wire rope.

The hoist also features integrated Smart Features to enhance your safety and help increase productivity with shorter load cycle times—especially useful for inexperienced crane operators. Safety also gets a boost from a safety light on the trolley that provides a visual signal of crane movement in the workspace to nearby personnel.

Ergonomic, user-friendly radio with display

Radio controls can improve operator safety and efficiency. The Konecranes S-series low headroom hoist radio has an easy-to-read display that indicates the lifted load, active Smart Features, battery life and other useful information. True stepless buttons help increase safety and accuracy, especially during slow and demanding lifting operations.

Operators using radio controls aren't tied to the load being lifted, this lets them choose the safest place to operate the crane and gives them better load visibility. And having load display in the operator's hands provides visual confirmation of the load to help prevent overloads.

With greater flexibility and improved user ergonomics operators can manage the load more precisely and swiftly so load handling becomes more efficient.



Normal headroom hoist UP TO 12.5 TONS

The normal headroom hoist for single-girder cranes is the right choice when you want to maximize the working area underneath the crane. With only one bridge beam, the hoist operates or travels on the lower flange of the bridge girder and load handling is smooth and accurate.



Double-girder hoist UP TO 20 TONS

The double-girder hoist is the right choice when you need a higher hook height. With two bridge beams the hoist travels on bridge girders attached to the top of or underneath the crane girder. A sturdy double-girder structure provides safe lifting in all kinds of industrial settings.



Machinery hoist UP TO 12.5 TONS

A typical application for the machinery hoist is raising or lowering huge objects such as a stadium score clock. As a winch-type system, the machinery hoist does not contain a hook block by default but it can be provided if needed. A sturdy steel rope and a reliable hoist handles repetitive work easily.



Fixed hoist UP TO 12.5 TONS

This is a good choice when you need to utilize existing structures. The fixed hoist is a stationary unit delivered with a hook and is usually attached to an existing platform or trolley. A fixed hoist is basically a double girder trolley but without the trolley, only hoisting machinery, electrical wiring, and the hook.

A crane to fit your needs

You can use the Konecranes S-series hoist on many different types of cranes, depending on your specific requirements.



Jib crane

Jib cranes are integral to any production process that requires both speed and accuracy. Designed for flexibility, durability and operator comfort, you can easily install a jib crane in a key position and later relocate it when your work environment changes.



Gantry crane

When a traditional overhead crane is not suitable, a gantry crane with specially designed steel structures is ideal. It maximizes your operating area, especially when you place cranes at different levels.



Wall console crane

Wall console cranes can be used to transport materials to specialized workstations, and to handle components inside assembly cells. They operate below overhead cranes, managing logistics flows in production areas.



Single-girder crane

A single-girder Konecranes S-series crane, with the hoist on a box or profile girder, is ideal for loads up to 12.5 tons. Its compact size and small approach dimensions allow you to make the most of the working area underneath the crane. Its light weight means less stress on your building structure making it more cost efficient.



Double-girder crane

A double-girder Konecranes S-series crane, with the hoist above the two main girders, is the best choice for heavier loads and longer spans. A capacity of up to 20 tons allows higher duty classes, while the double girder maximizes trolley approach dimensions as well as the height of the hook. Plus it's big enough to accommodate a maintenance platform to improve service access.



Under-running crane

An under-running Konecranes S-series crane is a good choice for facilities that want to free floor space of obstructions. These cranes usually travel on the lower flange of a runway beam attached to the ceiling, with no need for supportive floor columns. The hoist can get very close to the end truck, maximizing the bridge end approach towards the end of the runway. Its structure limits the crane to a maximum load of 10 tons.



Precise, flexible crane helps material flow in a variety of industries

General manufacturing



When any interruption is a production loss, the right lifting equipment will help keep your workflow running. The Konecranes S-series is a robust and reliable crane that gives you the high accuracy needed for assembly work.

Automotive



Advanced Speed Range (ASR) and Smart Features increase speed and accuracy while optimizing safety and material handling in critical automotive processes.

Metals and steel



In challenging environments full of dust and heat, production must run smoothly without unplanned interruptions. As a service crane, the Konecranes S-series is safe, reliable and easy to use, giving operators the freedom to concentrate on maintenance tasks.

Paper and forest



The Konecranes S-series is an ideal service crane—reliable and easy to use for all kinds of maintenance tasks. Plus the drum and synthetic rope do not require lubrication which helps the process area stay clean.

Intelligent lifting with Smart Features

Our Smart Features technology helps improve crane safety and usability. Load control features help the crane operator position the load quickly and accurately, reducing cycle times and improving productivity.

Snag Prevention stops crane movement if the hook, sling or load accidentally gets caught on another object. It helps prevent damage to the load, crane and other machinery.

Hook Centering eliminates side pull during lifting by positioning the bridge and trolley directly over the load. This reduces wear and tear on components, speeds up load cycle times and simplifies operation.

Follow Me lets the operator manually guide the hook to any desired location helping improve cycle times and hook accuracy. Once the feature is activated, the crane intuitively follows the hook making it quick and easy to move the empty hook or light loads giving you more efficient material handling.

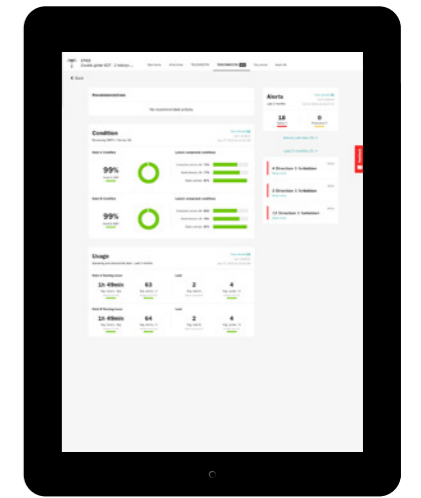
Optional Smart Features

Sway Control, Microspeed, Load Floating and many other features are also available. Ask our sales team which features would be best for your operations.



See our Smart Features in action

bit.ly/4aebMOR



The power of data

TRUCONNECT Remote Monitoring provides the visibility you need to fully understand the day-to-day use of your cranes. Your TRUCONNECT data combined with inspection and maintenance information can help you make informed decisions on maintenance, safety concerns, productivity, training, and service and equipment investments.

You can see your TRUCONNECT data summarized in easy-to-read graphs and charts on the **Konecranes Portal**. If you have a Konecranes service agreement you can also see reports from your service visits, open safety and production risks and even an overview of spend by service type.

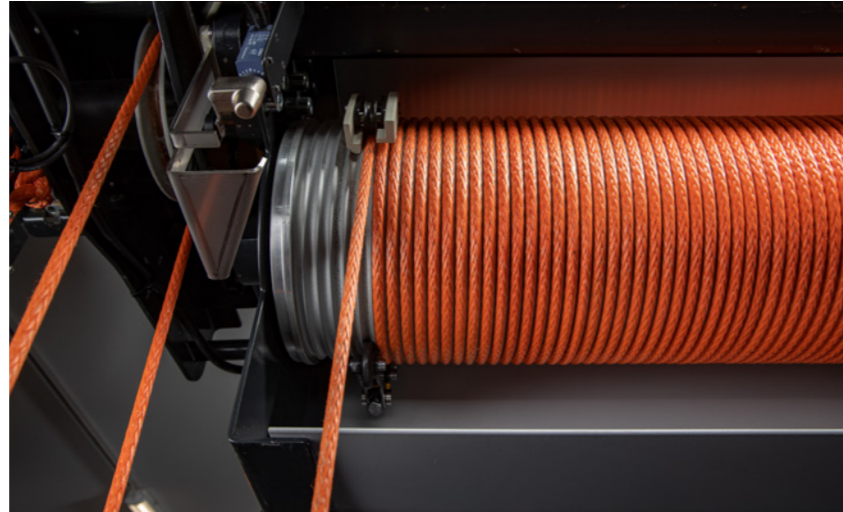
TRUCONNECT data can alert you to problems with your cranes before they give way to critical issues that can impair safety and performance, helping you plan and leaving less room for surprises. Analyzing TRUCONNECT data can also help you develop an operational baseline and identify opportunities for maintenance and process improvements.

Remote Monitoring can also be added to your other cranes as a retrofit to give you a comprehensive fleet view.

Synthetic rope is light, clean and safer to handle

We did the tests. Before launching the Konecranes S-series crane with a synthetic rope, we did thousands of hours of testing. The rope is designed to be safer and more durable and helps reduce wear and tear on reeving components. It's lightweight, requires no lubrication, and is fast to install.

Konecranes is the first industrial overhead crane company to use the Dyneema® fiber for hoisting. Dyneema is one of the world's strongest fibers and has been used for more than 30 years in demanding rigging applications such as lifting slings, mooring and towing large sea vessels. Lives depend on it during search and rescue operations and mountain climbing.



Synthetic rope vs. steel wire rope

FEATURE	SYNTHETIC ROPE	STEEL WIRE ROPE
Material	High performance synthetic	High strength steel
Breaking strength	Very high: consistently exceeds 5:1	High: meets or exceeds 5:1
Weight	Light – 80% lighter than steel	Heavy
Kink resistance	Will not kink	Will kink, requires replacement
Resistance to bending	Returns to original shape with no permanent damage	Will bend and deform, requires replacement
Bird cage resistance	Returns to original shape with no permanent damage	Will bird cage and deform, requires replacement
Lubrication	Not required	Regular lubrication required
Safety	Synthetic rope does not barb and is lightweight and flexible, reducing the chance of cuts to hands or ergonomic injury during rope handling	Steel wire can fray and is heavy and rigid, increasing the risk of hand lacerations or ergonomic injury during rope handling

How durable is synthetic rope? Watch the video to find out. bit.ly/3v2SM7b



Maximize crane reliability and performance

You can maximize the lifecycle value of your Konecranes S-series crane with a service program that is tailored to your requirements. Regular inspections and preventive maintenance help identify risks and opportunities for improvement while supporting compliance with safety regulations.

Service programs tailored to your operations

Preventive maintenance conducted at regularly scheduled intervals can often be the most effective way to maintain and potentially extend the lifespan of your cranes. Konecranes experts can help you build a service program—from basic inspections to a comprehensive maintenance program—tailored to your operations.

each year of all different makes and models. You get the advantage of local inspectors and technicians with access to a wealth of knowledge from around the globe.

Why choose Konecranes as your crane service provider?

We have the largest and most extensive service network in the industry, servicing hundreds of thousands of assets

We take a comprehensive, systematic and collaborative approach to managing your assets throughout their lifecycle. We take time to meet with you one-on-one to share our findings, provide recommendations based on our industry-leading expertise and discuss how each action impacts your operations and the entire health of your business.


Sustainability at every stage of the crane's lifecycle

We are committed to providing sustainable solutions and services while preventing and minimizing emissions and waste. Lifecycle thinking combined with usability, eco-efficiency and safety guide us in our product design. Our aim is to maximize the lifecycle value of our products.





Konecranes is a global leader in material handling solutions, serving a broad range of customers across multiple industries. We consistently set the industry benchmark, from everyday improvements to the breakthroughs at moments that matter most, because we know we can always find a safer, more productive and sustainable way. That's why, with around 16,600 professionals in over 50 countries, Konecranes is trusted every day to lift, handle and move what the world needs. In 2023, Group sales totaled EUR 4.0 billion. Konecranes shares are listed on Nasdaq Helsinki (symbol: KCR).

© 2024 Konecranes. All rights reserved. 'Konecranes,' 'Moves what matters,' TRUCONNECT and  are either registered trademarks or trademarks of Konecranes.

This publication is for general informational purposes only. Konecranes reserves the right at any time, without notice, to alter or discontinue the products and/or specifications referenced herein. This publication creates no warranty on the part of Konecranes, express or implied, including but not limited to any implied warranty or merchantability or fitness for a particular purpose.

KONECRANES Moves what matters.