

TECHNICAL INFORMATION

Konecranes RMG

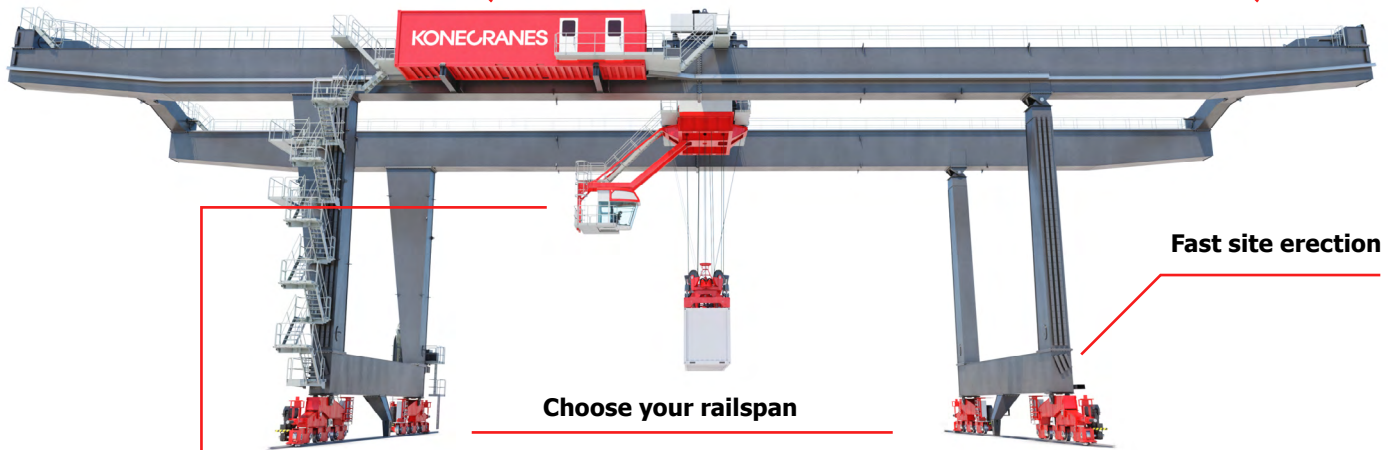


Konecranes RMG

Modular and customizable to your requirements

E-room and transformer room combined in one container space

Choose your operating width



Fast site erection

Choose your railspan

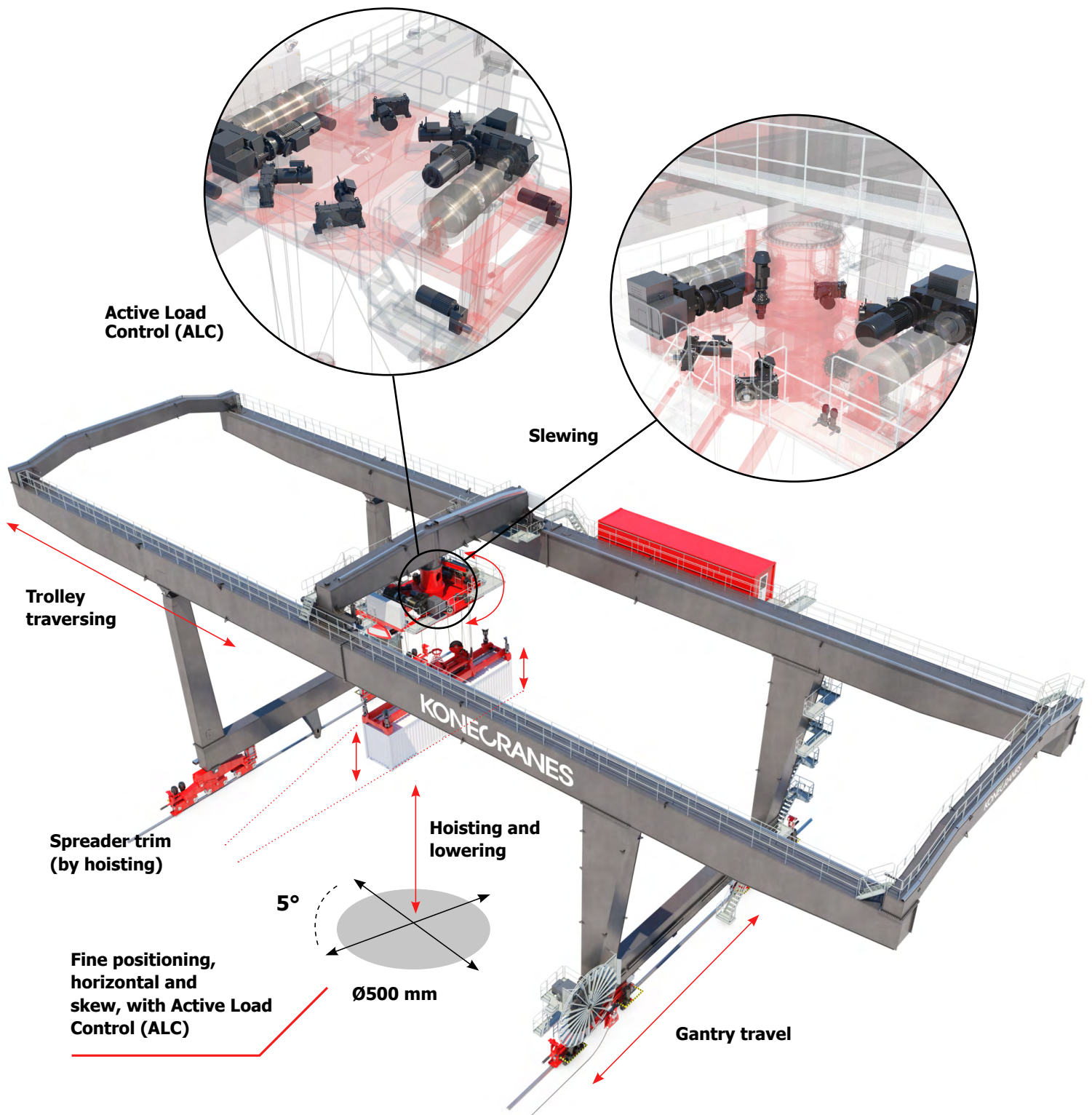


Cabin in position optimized for intermodal

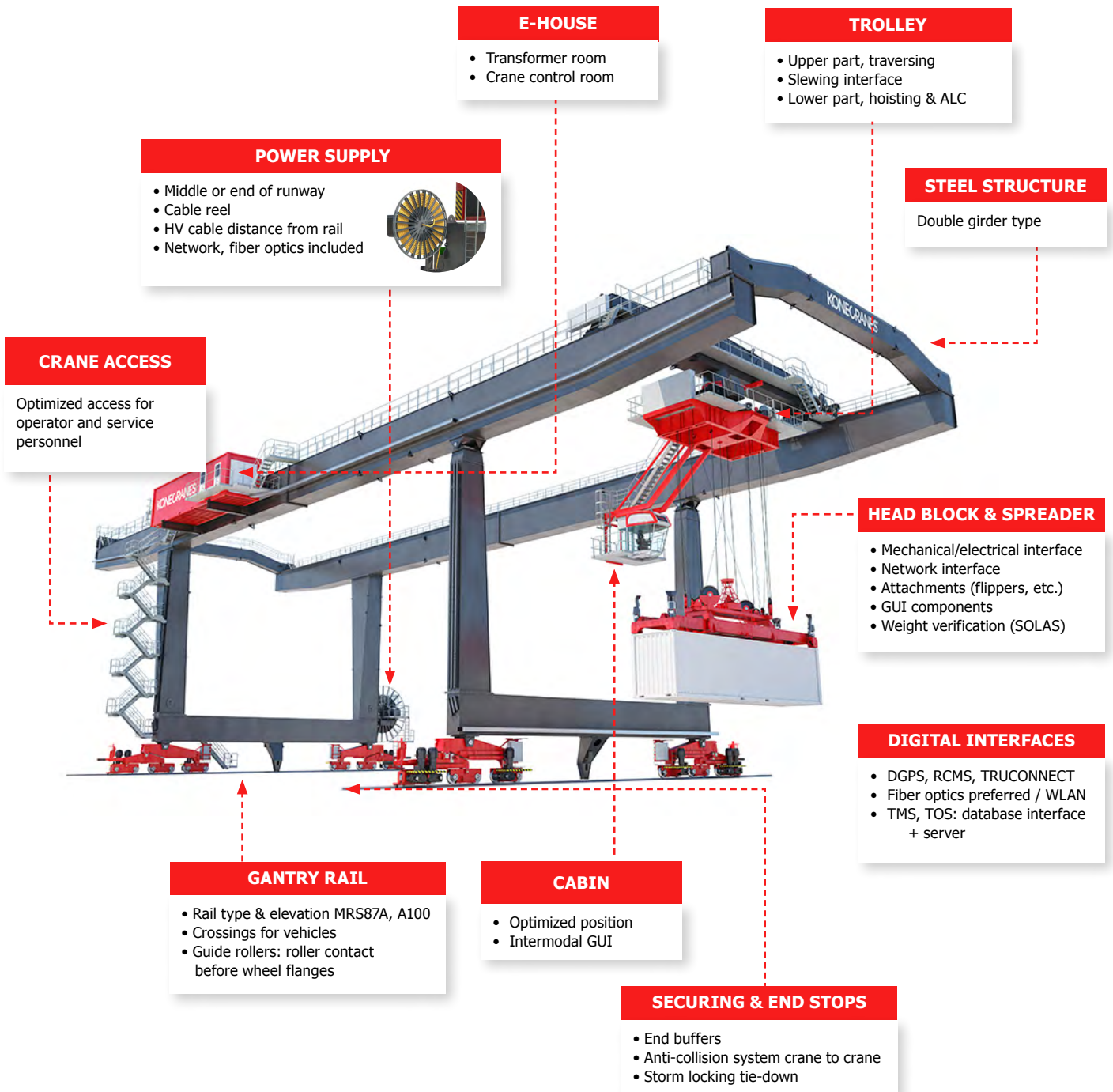
(best view to rails)

Konecranes RMG

Main functions

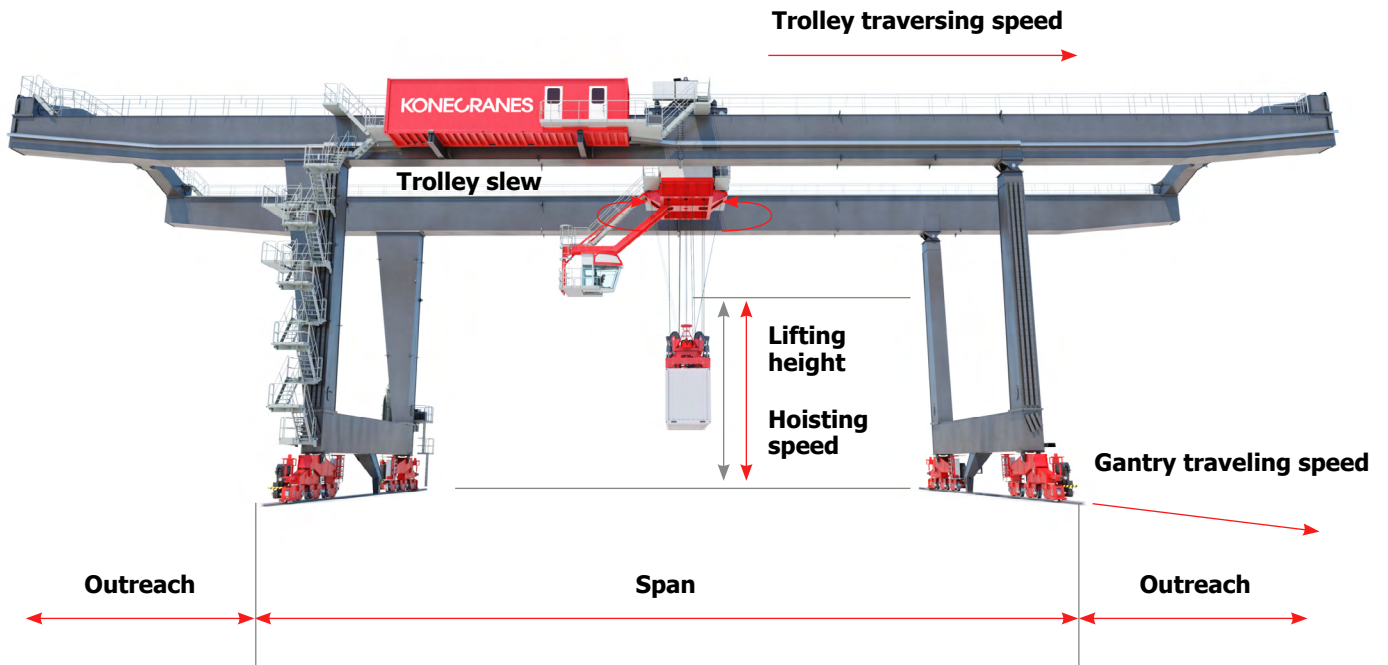


Konecranes RMG



Konecranes RMG

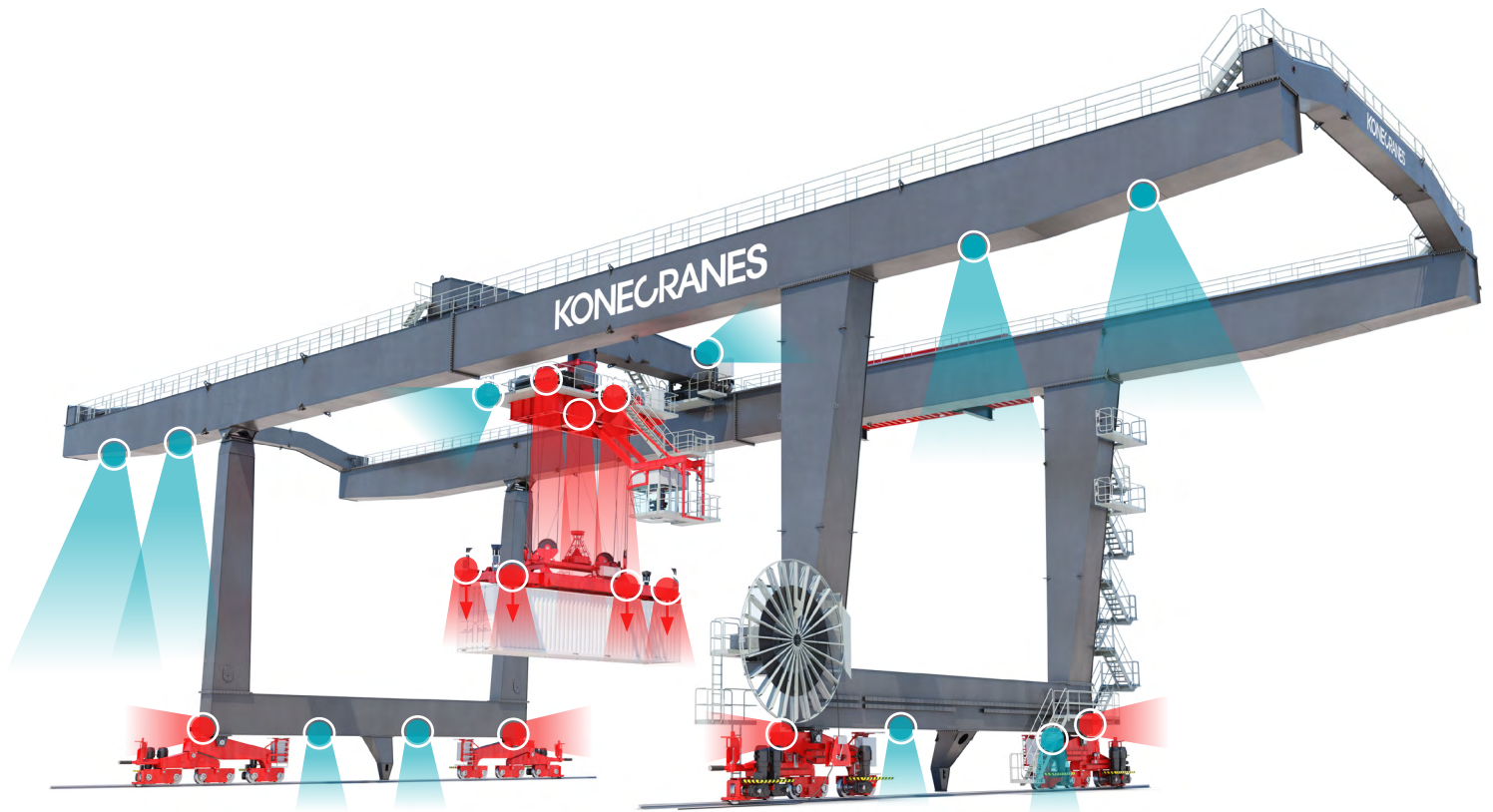
Dimensions, speeds



Span	Max. 48 000	Hoisting speed	30 - 45 m/min (loaded) 60 - 90 m/min (empty)
Outreach (cantilevers)	Max. 2 x 18 000	Trolley slewing speed /slewing angle	1.6 - 2 rpm / 310 °
Lifting height	Max. 19 000 (1-over-5)	Trolley traversing speed	120 - 150 m/min
Capacity	40 - 50 t (STD) Max. 45 t (STD), with grapple arms Max. 65 t (HD), twin-lift	Gantry traveling speed	120 - 150 m/min

Konecranes RMG

Clearest view in all directions



A/V component locations

- PTZ camera in the trolley
- 4 fixed cameras in the spreader
- 4 fixed cameras on the bogies
- Crane-to-crane anti-collision lasers in bogies
- Microphone in the cabin
- Loudspeaker on the trolley

+

Multiple optional cameras

Konecranes RMG

Path to port automation

More boxes per operator

1. Manual operation

Start with your existing manual equipment at the quayside, on the apron or in the container yard. We know you probably have different brands of equipment – we can do retrofits on non-Konecranes equipment too.

2. Smart Features

Add Smart Features to improve your performance and safety. For new equipment or as retrofits to existing equipment, ensuring that your operator experience is harmonized.

3. Supervised operation

Give your operators the power of automation to assist with repetitive tasks. For example, automated RMG stacking and housekeeping in the yard. The onboard operator stays in control in the cabin, learning how the system works. From there, the transition to automation is easier. The operator can be smoothly relocated to a remote operating center, decoupled from the crane.

4. Automated operation

If you move to automated operation, adding automation technology and system elements in the yard, it's a relatively simple transition that can be done in manageable phases, step-by-step at the pace you and your business need.



At any stage, you can apply remote operation. The crane and operator are decoupled, which improves safety and productivity by eliminating operator idling time. Smart Features are recommended to make the remotely operated cranes more effective.

Remote Operating Station (ROS)

The Konecranes ROS is the result of detailed ergonomic analysis and feedback from customers.

- 38" wide screen
- 10" touchpanel
- 2 joysticks
- Headset
- Adjustable table and screen height





Konecranes is a global leader in material handling solutions, serving a broad range of customers across multiple industries. We consistently set the industry benchmark from everyday improvements to the breakthroughs at moments that matter most, because we know we can always find a safer, more productive and sustainable way. That's why, with around 16,600 professionals in over 50 countries, Konecranes is trusted every day to lift, handle and move what the world needs. In 2022, Group sales totaled EUR 3.4 billion. Konecranes shares are listed on Nasdaq Helsinki (symbol: KCR).

© 2023 Konecranes. All rights reserved. 'Konecranes', 'Lifting Businesses' and  are either registered trademarks or trademarks of Konecranes.

This publication is for general informational purposes only. Konecranes reserves the right at any time, without notice, to alter or discontinue the products and/or specifications referenced herein. This publication creates no warranty on the part of Konecranes, express or implied, including but not limited to any implied warranty or merchantability or fitness for a particular purpose.